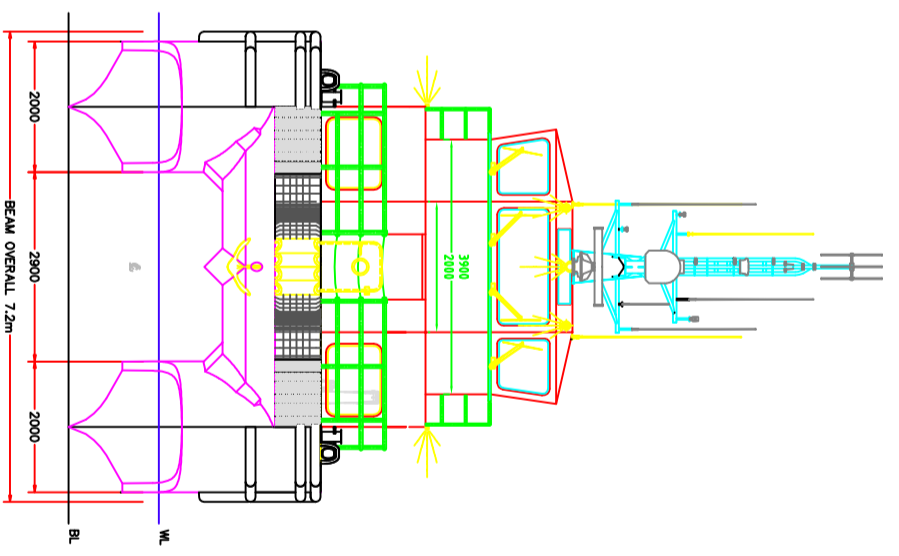
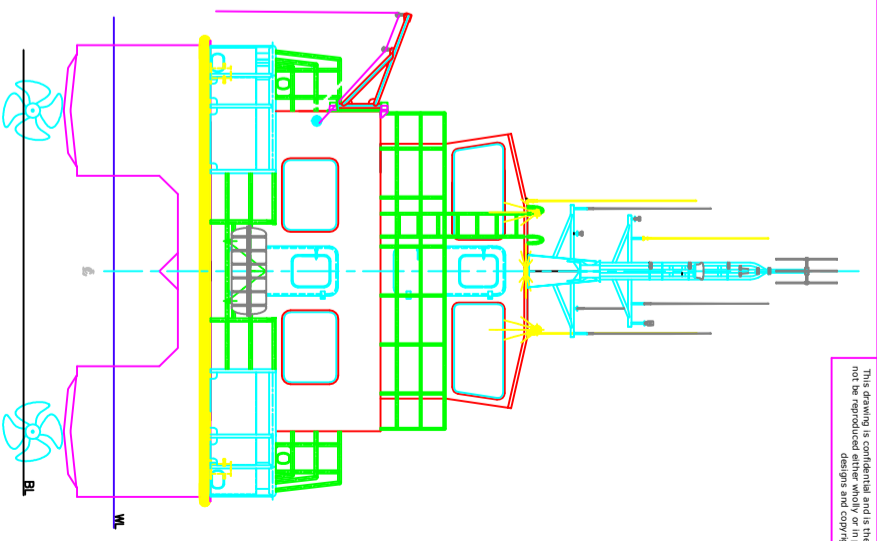


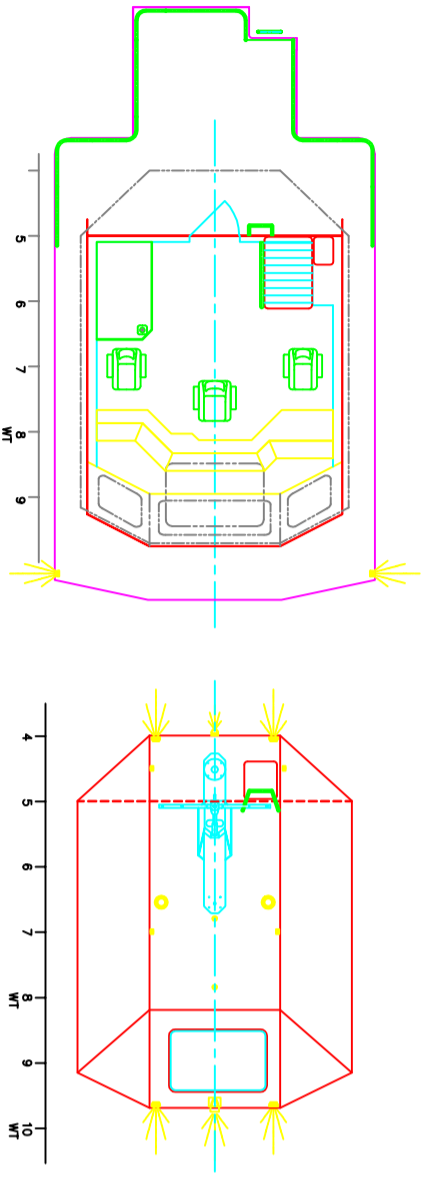
PROFILE FROM STARBOARD



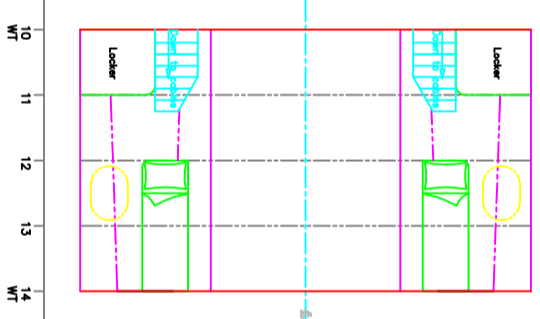
VIEW FROM FWD



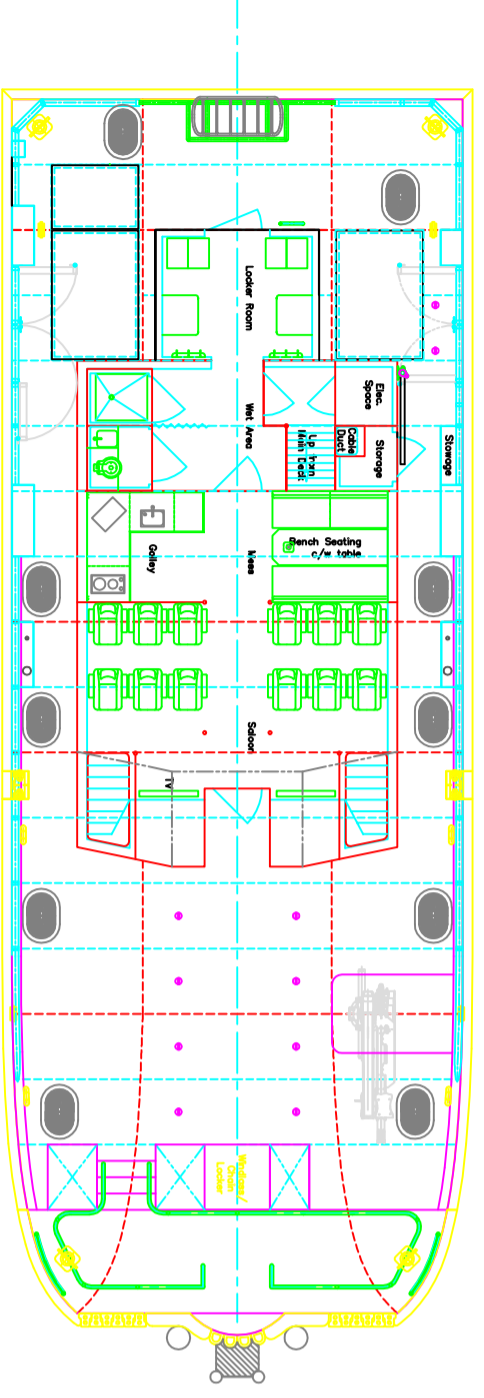
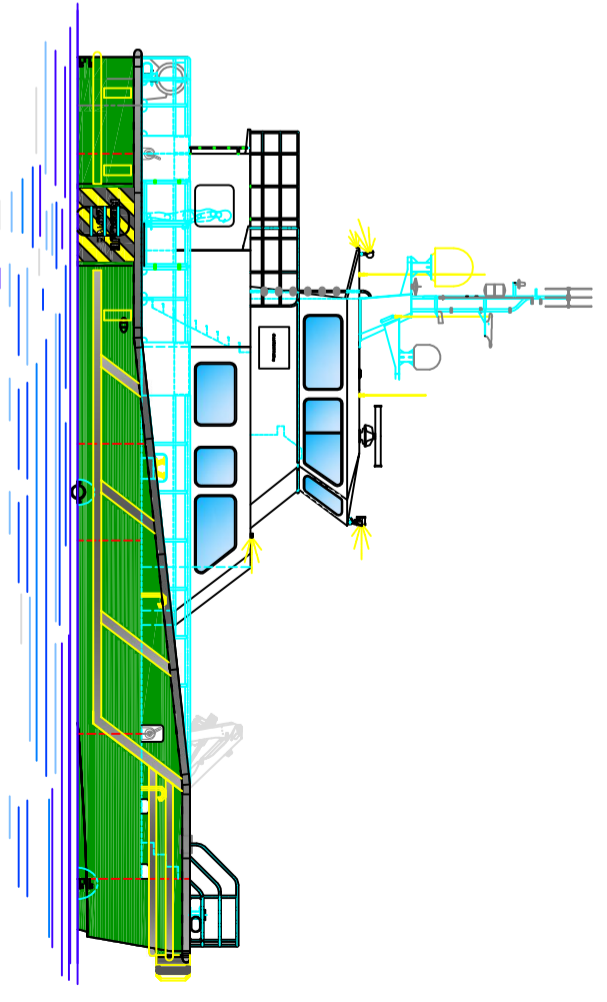
VIEW FROM AFT



PLAN ON WHEELHOUSE DECK



PLAN ON CREW CABINS



PLAN ON MAIN DECK

**PRINCIPLE DIMENSIONS**

- Length Overall 18.9m
- Beam Overall 7.2m
- Draft (light)(USV) 1.3m
- Payload 51 tonnes
- Speed (max) 25 knots
- Engines Cummins QSK-19
- Propulsion 2 No. 900mm Props - tbc

Rev.	Date	Rev. description	By	Approved
1	18.06.13	Drawing generated	DOC	3
0	17.06.13	FIRST ISSUE	DOC	3

All dimensions in mm, unless stated  
 Scale: 1:40 Printed at A3  
 18 0145 001

19m WINDFARM SERVICE VESSEL  
 GENERAL ARRANGEMENT - VER2-C  
 REFIT



**Almaritec**  
 Aluminium Workboats  
 Almaritec Ltd, Windfarm Quay, 80/75, Northumbria Road, NE24 1PX  
 Tel: +44 (0)1670 870000 Fax: +44 (0)1670 870001  
 Email: sales@almaritec.co.uk Web: www.almaritec.co.uk